

Amecath

Smart Cath.®

Haemodialysis Catheters

A solution to A problem

Problem:

An important feature of dialysis catheters is the suction openings to withdraw blood.

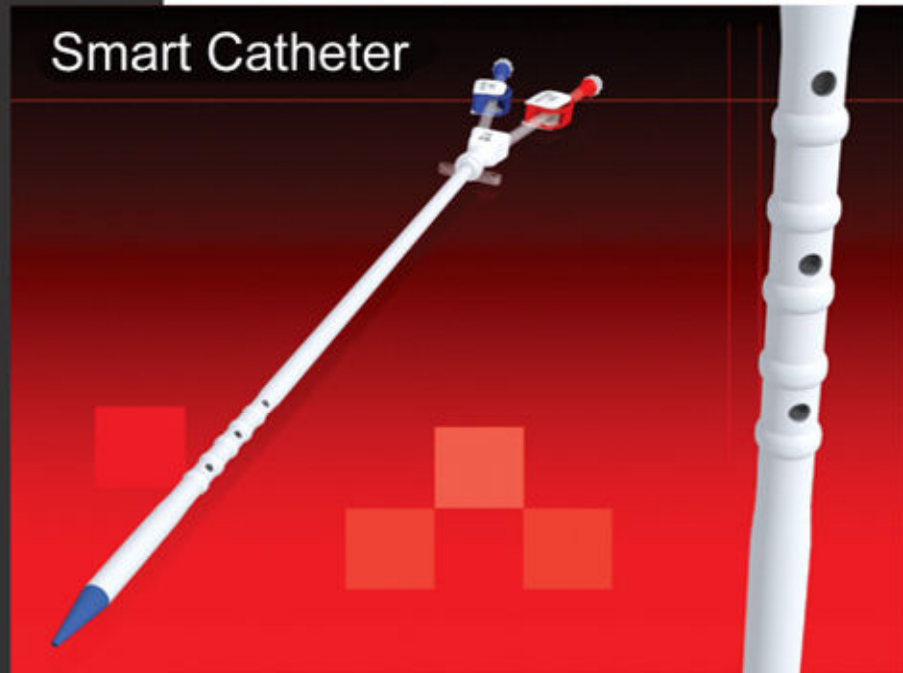
Keeping the suction openings clear of thrombolytic material and away from the vessel wall is clearly essential to dialysis function since an adequate supply of blood must be removed from the patient to be dialyzed.

However, a problem with dialysis catheters is that during blood withdrawal, as suction is being applied through the catheter openings and lumen, the suction can cause the catheter to be forced against the side wall of the vessel, known as "side port occlusion", which can block the opening and adversely affect the function of the catheter.

In fact, the opening can become completely blocked, thereby preventing necessary intake of blood, i.e. venous flow

NEW

Smart Catheter



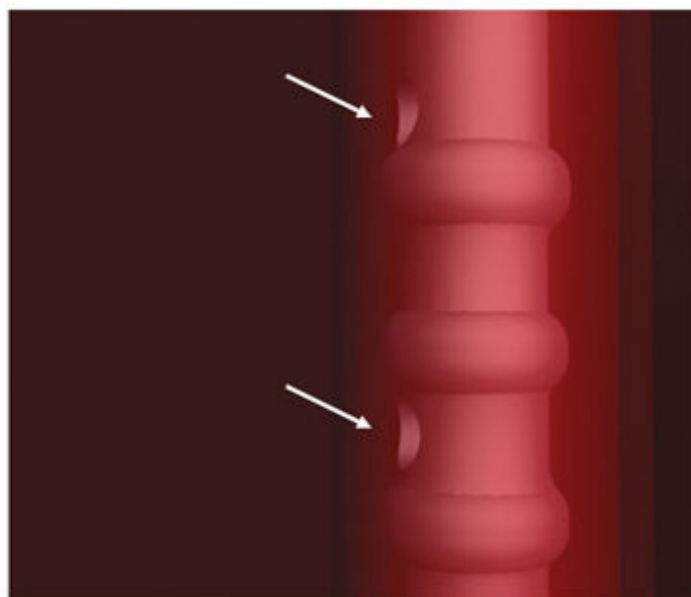
Solution:

Annular grooves where the side holes lie at their bottoms. Those grooves prevent the side holes from being sucked against the vessel wall and even create annular passage for the blood flow.

CE
0086
EN ISO 13485



Annular grooves where the side holes lie at their bottoms



Catheter Features:

Designed to get the maximum flow.
Smooth annular grooves.
Soft tip, length marked, Small rotating fixation wing
Extension lines stand repeated clamping and declamping.
Multiple thread female luer end.
Injection caps
Variety of sizes, lengths and shapes.

Kit features:

Heavy duty length marked guide wire with advancer.
Long tapered tip dilators with stopper to avoid over insertion.
Scalpel # 11 for small snipping.

Kit contains:

Polyurethane catheter
J ended length marked guide wire
18 G - 7 Cm Introducer needle
5 CC syringe
2 Vessel dilators
Scalpel # 11
Injection caps
Patient Identification Sticker.

Option:

Guide Wire Guiding Syringe (GS)
Guide Wire Y Connector (GY)
Nitinol Guide Wire (N)
End Safety Valve (EV)

Ordering information:

Smart Cath®

DOUBLE LUMEN SMART CATHS

Fr. Size	Cm. length	Subclavian KIT CODE	Jugular KIT CODE	Pre Curved KIT CODE
12	12	DLC-1212-KSM	DLC-1212-JKSM	DLC-1212-PCKSM
12	15	DLC-1215-KSM	DLC-1215-JKSM	DLC-1215-PCKSM
12	17	DLC-1217-KSM	DLC-1217-JKSM	DLC-1217-PCKSM
12	20	DLC-1220-KSM	DLC-1220-JKSM	DLC-1220-PCKSM
14	15	DLC-1415-KSM	DLC-1415-JKSM	DLC-1415-PCKSM
14	17	DLC-1417-KSM	DLC-1417-JKSM	DLC-1417-PCKSM
14	20	DLC-1420-KSM	DLC-1420-JKSM	DLC-1420-PCKSM

Smart Cath®

TRIPLE LUMEN SMART CATHS

Fr. Size	Cm. length	Subclavian KIT CODE	Jugular KIT CODE	Pre Curved KIT CODE
13	15	TLC-1315-KSM	TLC-1315-JKSM	TLC-1315-PCKSM
13	17	TLC-1317-KSM	TLC-1317-JKSM	TLC-1317-PCKSM
13	20	TLC-1320-KSM	TLC-1320-JKSM	TLC-1320-PCKSM
14	15	TLC-1415-KSM	TLC-1415-JKSM	TLC-1415-PCKSM
14	17	TLC-1417-KSM	TLC-1417-JKSM	TLC-1417-PCKSM
14	20	TLC-1420-KSM	TLC-1420-JKSM	TLC-1420-PCKSM

* Other sizes and lengths are available on request.

* For smaller sizes please refer to Amecath Pediatric Range

CAUTION:

Inappropriate choice of device design for the intended insertion site and over-insertion of dilators or guide wires may lead to fatalities from haemothorax or haemopericardium following the insertion of these devices.

(Ref. MDA/2003/020 Issued: 18 July 2003)

RECOMMENDATIONS:

- Use length marked catheter with soft tip and proper size.
- Use length marked guide wire. **If any resistance is felt during advancement, the needle should be pulled out with the wire still inside.** and the procedure repeated. This reduces the risk of the wire being cut off by the needle tip.
- Use short dilators or dilators with stopper.

© PATENTED manufacturing property of AMECO MEDICAL INDUSTRIES

U.S PATENT No. 7740780

Manufactured by:
AMECO MEDICAL INDUSTRIES

Industrial Zone B4 - Plot 119 East
10th of Ramadan City - EGYPT

Tel: +20.15.383067 - Fax: +20.15.383068

E-mail: info@amecath.com

www.amecath.com



Authorized European Representative
Prumenet

Route du Pont Coloré
13550 PALUDS de NOVES FRANCE

TEL ++ 33 4 90 95 42 53

FAX ++ 33 4 90 95 02 91

E-mail: prumenet@amecath.com

DIA-BR-2 Rev.09/1